



455 Gold Pass Heights  
Colorado Springs, CO 80906

MON.-FRI., 8:30 AM-4:30 PM  
719-473-8890  
PARTNERSINHOUSING.ORG

FALL 2019



# HOPE FOR FAMILIES

## FAMILY SOLUTIONS COLLABORATIVE

In an effort to provide comprehensive community support for families in crisis in the Pikes Peak region, Partners in Housing, along with Catholic Charities and Family Promise, has been hard at work to formalize the Family Solutions Collaborative. On October 3rd, Partners in Housing co-hosted a Families in Crisis Summit. Spending the day with other direct service providers, who support families in need, we developed a focus on the work to be done to create a better referral network, common goals for preventing family crisis, and a clear “map” of services for families. As a follow up to Point #9 added to the City’s Homelessness Response last year, which promoted added services, family shelter units, and more transitional housing units, the Family Solutions Collaborative will strive to create a cohesive system of support. With a vision of Families Home Together, Tonight, Tomorrow and Forever, we will continue to meet to refine the goals of our community and the solutions needed to accomplish them.



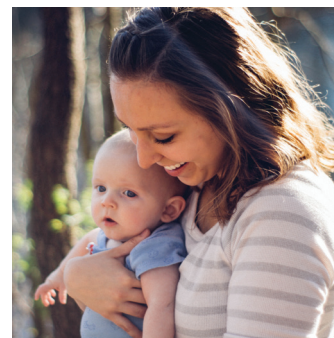
**TO LEARN HOW YOU CAN MAKE A DIFFERENCE IN THE LIFE OF A FAMILY EXPERIENCING HOMELESSNESS, VISIT PARTNERSINHOUSING.ORG.**

### ENTERPRISE ZONE

- **WHAT IS IT?** Partners in Housing is eligible for the El Paso County Enterprise Zone, a 25% state tax credit.
- **HOW DO I QUALIFY?** Donations for this tax credit must be made in the form of a check. Please donate a minimum of \$250 made payable to “El Paso County Enterprise Zone” with Partners in Housing and the last four digits of your social security number in the memo line. Send your check in the enclosed, addressed envelope to Partners in Housing.
- **WHAT IS THE IMPACT?** Individual or corporate contributions help 120 families in need move forward out of homelessness AND has the additional benefit of reducing your state tax liability.

### TWO TAX CREDIT BENEFITS CHILDCARE CONTRIBUTION TAX CREDIT

- **WHAT IS IT?** A gift to Partners in Housing’s Child Enrichment Center offers the greatest return! Your gift of \$500 or more is eligible for a Childcare Contribution Credit on your Colorado state taxes of up to 50% of your gift.
- **HOW DO I QUALIFY?** Please donate a minimum of \$500, payable to “Partners in Housing” using the enclosed envelope. Write “Child Enrichment Center” on the memo line.
- **WHAT IS THE IMPACT?** Your individual or corporate contribution to the Child Enrichment Center has a direct impact on the lives of over 250 children each year AND it has the additional benefit of reducing your state tax liability.
- **WHY GIVE?** With our current resources, we can only serve 120 families per year, but we receive almost 1000 applications every year. The need is great, but TOGETHER we can make a difference.
- **TO GIVE?** Visit [partnersinhousing.org/give-help](http://partnersinhousing.org/give-help) today.



**OUR MISSION.** Partners in Housing guides families in housing crisis from insecurity to stability, self-reliance and prosperity.

**PARTNERSINHOUSING.ORG**

# MOVING FAMILIES FORWARD

## EVENT FOLLOW UP:



ON JULY 25TH, PARTNERS IN HOUSING, WITH THE SUPPORT OF MANY GENEROUS SPONSORS AND ATTENDEES, RAISED OVER \$70,000 IN NET PROCEEDS TO SUPPORT THE PROGRAMS AND HOUSING SERVICES FOR OUR PARTNER FAMILIES.

All proceeds came directly to Partners in Housing, and we would like to thank our volunteers, speakers, and sponsors. Galiant Homes, Homebridge Financial, Cutting Edge Realty, US Bank and many others who sponsored the event and provided many hours in planning.

Our Colorado Springs community continues to thrive in the building and real estate industries and Partners in Housing is fortunate to receive their support for the Partner families in our program.

## Making the Holidays Brighter For Our Families.



As the holidays approach, we try to assist the families in the Partners in Housing program with the ability to provide special memories and develop traditions important to them.

We are asking for community support in the form of gift cards to be distributed directly to our Partner families. The cards easiest to use are Target, Walmart, King Soopers and Safeway and can be mailed to or dropped off at the Partners in Housing offices. We hope to have them all collected by December 11th.

**THANKYOU IN ADVANCE FOR MAKING THE HOLIDAYS BRIGHTER FOR THE CHILDREN IN OUR PROGRAM!**

## VOLUNTEER PROFILE: Ron Banta



We are so fortunate to have the support of Ron Banta as a Life Skills Facilitator and Program Committee Member at Partners in Housing. Four years ago, Ron came to us with a heart to help and a willingness to take on new challenges. Ron's volunteer role has grown over time and now he teaches classes at least once a month. Ron's delightful personality and sincere desire to affect change are only a couple of the reasons our Partners attend his classes in record numbers, always with positive feedback and rave reviews.

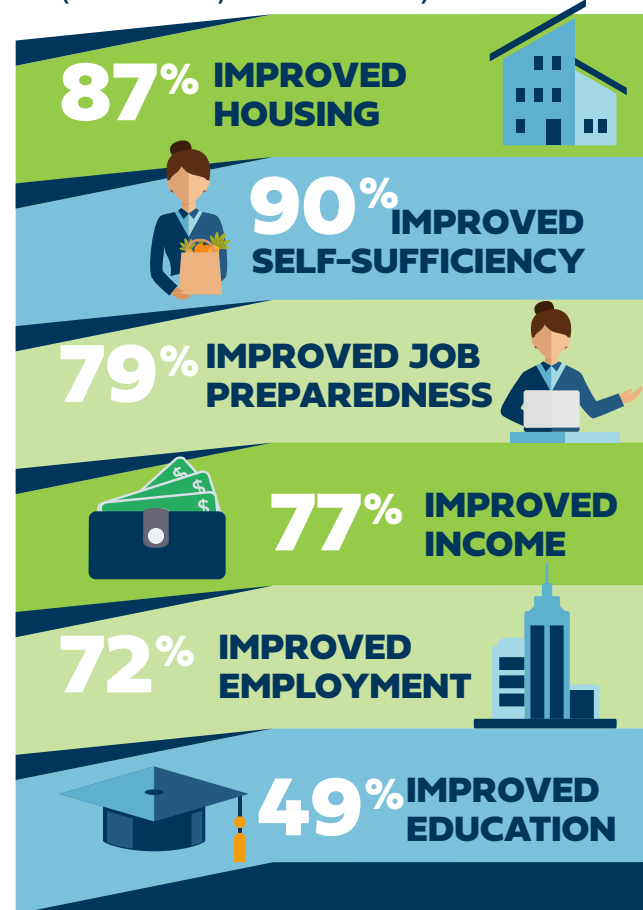
In addition to the direct client contact Ron provides each month, Ron assists with helping staff evaluate the effectiveness of services. His willingness to think critically and challenge tradition are a huge asset to the team as we look to expand services. Ron is always ready to take on the challenge of helping to connect to other resources, teach new classes or provide insight and a new way of thinking. Ron inspires everyone to do better and we're so thankful he chooses to volunteer with Partners in Housing!

Partners in Housing is so proud of the hard work of the Partners families who achieved the great successes shown in the following chart.



### FISCAL YEAR 2018-2019 OUTCOMES

Served 390 Individuals  
(127 Adults /263 Children)



### Board of Directors

- Mike Waters, Board President
- Barbara Harris, Board Vice President
- Brenda Lammers, Board Treasurer
- Keri Ellen White, Board Secretary
- Dan Apricio
- Bill Barnett
- Judith Barthel
- Andy Barton
- Pam Bruni
- Krystina Freeman
- Brad Poston
- Bob White
- Mark White
- Brendan Zahl

We are especially proud to have 3 former Partners serving on our board of directors, giving a client-centered perspective on agency decision-making.

All board members made financial contributions to PIH in FY18-19.

### Staff

- Mary Stegner, Executive Director
- Bonnie Andrzejczak, Leasing Clerk
- Jillian Birchmeier, Volunteer and In Kind Donations Coordinator
- Hannah Blessing, Individual Services Manager
- Megan Brown, CEC Coordinator/Support Specialist
- Ingrid Bruske, Intake Assessor
- Rebecca Cordova, Certified Credit Counselor
- Eric Evans, Family Services Director
- Dovey French, Program Manager
- Ricky Fulton, Housing Maintenance Coordinator
- Leonor Gonzales, Intake and Referral Administrator
- Katie Hauri, Family Caseworker
- Courtney Hoff, Grants Manager/RRH Program Manager
- Carolena Jackson, On-Call Support
- Yvonne Kelton, Accounting Clerk
- Elia Macias, Intake and Personnel Services Director
- Kendal Miller, VISTA Intern
- Cheryl Nygaard, Data and Software Analyst
- Linda Phillips, Intake and Referral Administrator
- Leslie Salinas, Family Caseworker
- Lora Schwahn, Family Caseworker
- Ronnie Smith, Housing Maintenance Coordinator
- Abel Tovar, Housing Operations Director